

Automix universal adhesive cement

## Features

- Multi-purpose self-etching and dual-curing cement
- Indicated for cementation of indirect inlays, onlays, crowns, bridges, and posts
- High bond strengths
- Quick and easy use
- Three shades
- Automix formula and applicator tip ensure accurate mixing and easy placement



**Ivoclar Vivadent, Inc.**  
www.ivoclarvivadent.us.com  
email@ivoclarvivadent.com

**U.S.**  
175 Pineview Drive  
Amherst, NY 14228  
**800-533-6825**

**Canada**  
2785 Skymark Ave. Unit 1  
Mississauga, Ontario L4W 4Y3  
**800-263-8182**

**Select XX.**

## Packaging

Available in an automix formula with automix tip. Original system pack contains a Double Syringe, Primer A, Primer B Metal Primer, and accessories: brushes, mixing pad and instructions. Double Syringe refills are available in each shade, and refills for each primer.

# Indirect restorations

## Seating and onlay and two full coverage crowns using Multilink automix universal adhesive resin cement

By Dr. Robert G. Ritter, DMD. Information provided by Ivoclar Vivadent Inc.

Within the past decade, dental manufacturers have introduced a variety of products that have simultaneously simplified and improved the delivery of quality restorative care. From ceramic materials with enhanced strength and wear characteristics to direct composites with nature-defying optical properties and better handling features, the restorative materials available to clinicians today afford all of us an opportunity to provide our patients with unsurpassed treatments in the most efficient yet scientifically sound manner possible.

Following are step-by-step procedures for seating an onlay and two full-coverage crowns using the automix formula of **Multilink** automix universal adhesive resin cement.

A 50-year-old female patient presents with failing amalgam restorations on teeth 12, 13 and 14 (Fig. 1). A thorough examination is performed, and the treatment plan calls for placement of an all-ceramic onlay restoration on tooth 12 and all-ceramic crown restorations on teeth 13 and 14 (Fig. 2). The teeth are isolated, prepared, impressioned and provisionalized, and the patient is dismissed.

When the definitive restorations are returned from the laboratory, the provisionals are removed, the preparations cleansed and dried, and the following adhesive protocol initiated.

1. Try in the restorations to verify fit, contacts, and color.
2. After removing the restorations, acid etch, rinse, and dry the internal aspects and silicate the internal aspects of porcelain. *Note:* At this time, the dental assistant mixes Multilink Primer A and Primer B in a well, which is used to condition the preparations.
3. Apply the primer mix to the preparations using a microbrush for 30 seconds to complete the self-etching adhesive conditioning (Fig. 3).
4. Air thin the primer on each tooth for 5 seconds (Fig. 4).
5. The base and catalyst of the Transparent Multilink Automix Universal Adhesive Cement are automatically mixed and dispensed into the internal aspects of the restorations using the automix applicator (Fig. 5).
6. Seat the restorations all at once, allowing the release of loose excess cement from the margins (Fig. 6).
7. Spot tack the restorations into place from the buccal aspect for 3 seconds per tooth (Fig. 7), then wave cure the cement for 5 seconds.
8. Once the excess cement is slightly hardened from the wave technique, clean up any excess using a scaler or curette, and use floss interproximally to remove the excess from the contact areas.
9. Cure each restoration for 40 seconds from the buccal, 40 seconds from the lingual and 40 seconds from the occlusal aspects (Fig. 8).
10. Verify final occlusion, adjust, and polish.

Fig. 9 shows the completed restoration. **DPR**



**Fig. 1** Preoperative view of the patient's failing amalgam restorations.



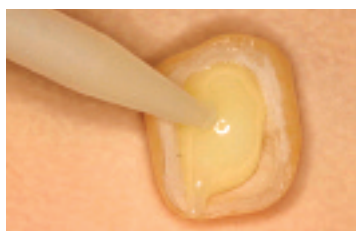
**Fig. 2** An onlay and two full-coverage crowns.



**Fig. 3** Apply Multilink Primer A and Primer B mix to the preparations.



**Fig. 4** Air thin the primer on each tooth for 5 seconds.



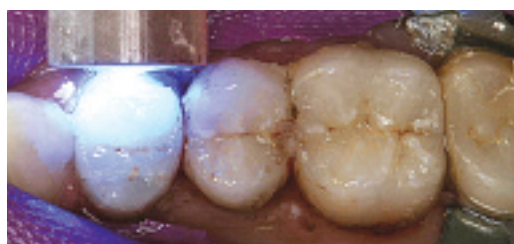
**Fig. 5** Using the Multilink automix tip applicator, dispense the universal cement into the internal aspects of the restorations.



**Fig. 6** Seat all restorations at once, allowing the release of loose excess cement from the margins.



**Fig. 7** Spot tack the restorations from the buccal aspect for 3 seconds per tooth.



**Fig. 8** Final cure for 40 seconds each from the buccal, lingual, and occlusal aspects of each tooth.



**Fig. 9** Postoperative view of the completed restorations.